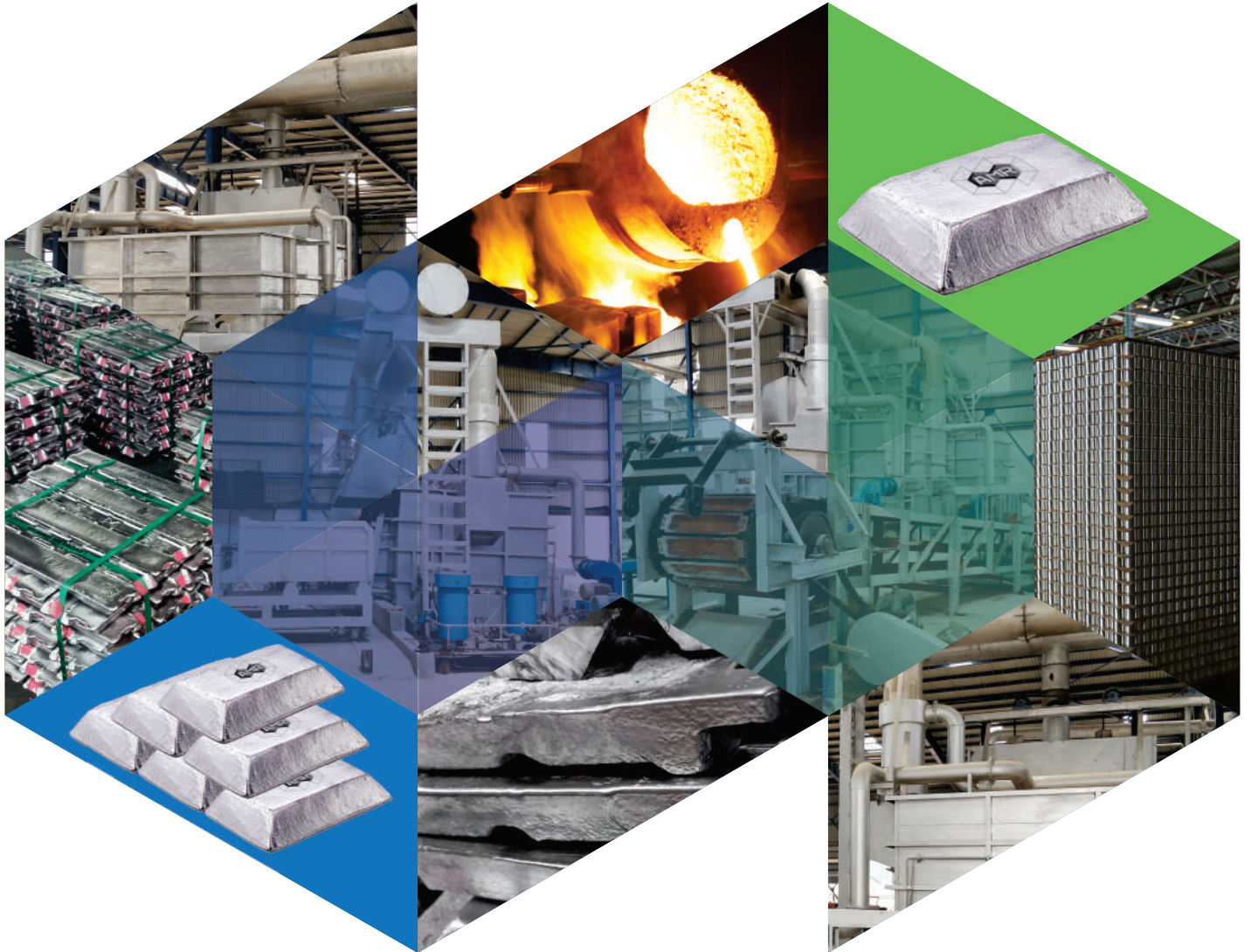


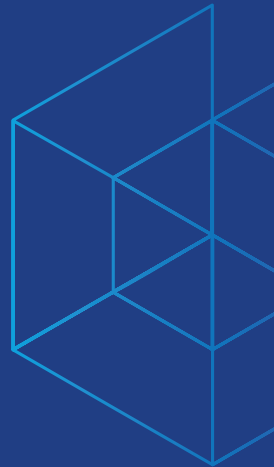
“Mastered with **TECHNOLOGY**  
crafted with **QUALITY**”



**ANNAI METAL**  
**REFINERIES**

Manufacturers of Aluminum Alloys





**Annai Metal Refineries** is a new age company involved in the **manufacture of Aluminium Alloys** of various grades using the latest technologies and environment friendly practices. At present the company has a manufacturing capacity of 12,000 MT per annum.

The facility is built on an area of **88000 Sq. feet** (2 acres) land with the provision to expand up to 24000 MT per annum production in the future.

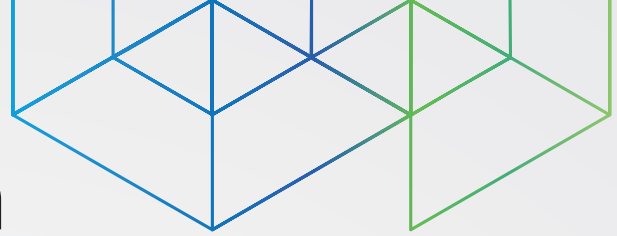
**AMR** is a part of **Jayachandran group of companies** having **35 years** of experience in Battery manufacturing industry, Lead and lead alloys manufacturing, Plastics recycling-manufacturing, E-Waste recycling and have recently ventured into Aluminium manufacturing business. The management is a perfect blend of Experienced personnel guiding the operations and dynamic youth involved in the executive positions within the group.

JC groups are a prominent and reliable name in the metal recycling industry in India with a total workforce of **1000+ employees** and **7 manufacturing** facilities present in **Coimbatore, Mangalore and Bangalore.**

Quality  
only happens  
when we **care**  
enough to do  
our **best**



# Vision & Mission



To be one of the top Aluminium recyclers in India by 2030 with sound presence in both domestic and international markets as a reputed and reliable manufacturer.

To create a state-of-the-art product with the latest technology available in the market with environment friendly practices employed in the manufacturing process.



To create the best value for money to all the stakeholders involved in the business which includes the Customers, Suppliers, Shareholders, Employees and the society as a whole.

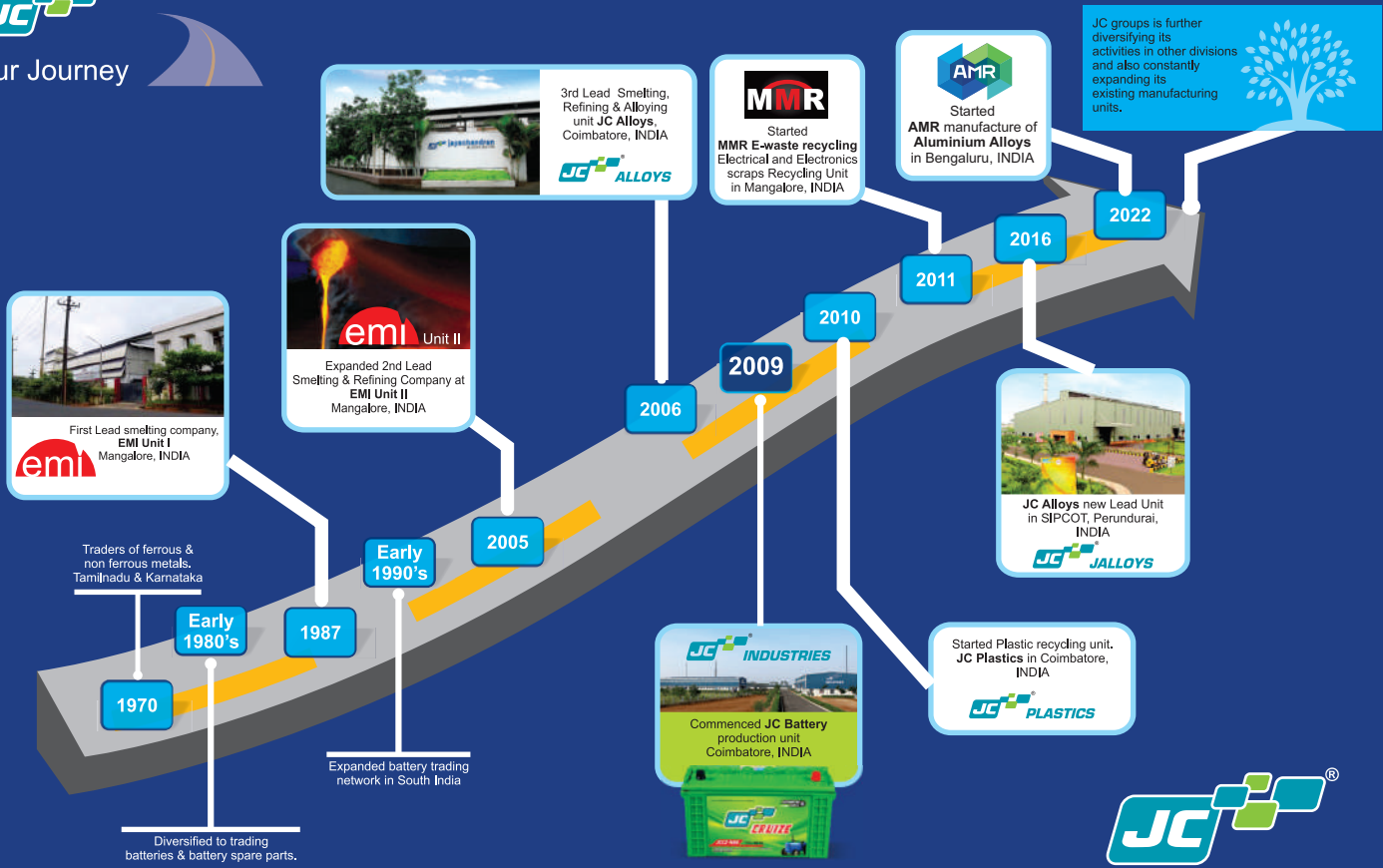
To create a reliable business atmosphere by working in accordance with all the government and legal provisions and strictly adhering to the same. Timely fulfillment of all business commitments by the stipulated conditions agreed upon with all the stakeholders.







## Our Journey



## Management Team



### A. Nithin

Managing Director

**Experience:** 5 years in Lead & Battery Industry.

**Qualification:** B.E Civil Engineering from CIT, India; Master of management from University of Sydney, Australia



### C. Prasath

Director

**Experience:** 13 years in Lead & Battery Industry.

**Qualification:** B.E ECE degree from PSG, India; MBA from Bradford School of Management, UK



### P. Arumugam

Director

**Experience:** 35 years in Lead Smelting Company, Metal Scraps Trading and Recycling.



### A. Sabarinathan

Director

**Experience:** ⇒ 16 years in Lead & Battery Industry. ⇒ 1 year in Operations, Nokia - Germany.

**Qualification:** B.E - EEE degree from BITS, India; MS - Electrical from ULM, Germany



### C. Bharanikumar

Director

**Experience:** ⇒ 13 years in Lead & Battery Industry. ⇒ 5 years in Software Industry, USA.

**Qualification:** B.E - ECE degree from KCT, India; MS - Applied Mathematics from MSU, USA



### A. Hari

Director

**Experience:** 7 years in Metal, Battery, Plastic Industry, Aluminium recycling, E-waste recycling and Plastic recycling business.

**Qualification:** B.E IT degree from KCT, India; MBA, UK

# Quality & Testing standards



- ▶ Facility is approved by Karnataka state pollution control board.
- ▶ Elemental specifications of Aluminium alloys are tested with SPECTROMAXx Optical emission spectrometer.
- ▶ Volumetric analysis apparatus for testing.
- ▶ Gravimetric analysis apparatus.
- ▶ In the process of achieving ISO and OHSAS standards.






# Infrastructure



Any organization's most important value creating asset is its infrastructure. AMR is built on a land area of 88000 Sq. Ft (2 Acres) land with thorough analysis, design and planning by infrastructure and technical experts.



The facility is well equipped with the latest machinery available with great emphasis on automation and safety standards.

Keeping the environment in mind, the operations are supplemented by a well-designed and efficient Air pollution control system which is capable of treating and filtering all air effluents.



# Product Range

LM series | ADC series | ALSI series | AC4 series

Alloys manufactured as per customer specifications

Material	Grade	Si	Fe	Cu	Mn	Mg	Zn	Ni	Ti	Pb	Sn	Cr
A380	Max	9.50	1.30	4.00	0.50	0.10	3.00	0.50	-	-	0.35	-
	Min	7.50	-	3.00	-	-	-	-	-	-	-	-
AC4A	Max	11.00	0.55	0.25	0.60	0.60	0.25	0.10	0.20	0.10	0.05	0.05
	Min	8.00	-	-	0.30	0.30	-	-	-	-	-	-
AC4B	Max	9.00	0.40	4.00	0.50	0.40	0.50	0.35	0.20	0.10	0.05	0.05
	Min	8.00	-	2.50	0.20	0.20	-	-	-	-	-	-
ADC10	Max	9.50	1.30	4.00	0.50	0.30	1.00	0.50	0.20	0.20	0.20	0.20
	Min	7.50	-	3.00	0.20	-	0.50	-	-	-	-	-
ADC12	Max	12.00	1.30	3.50	0.50	0.30	1.00	0.50	-	-	0.20	-
	Min	9.60	-	1.50	-	-	-	-	-	-	-	-
ADC6	Max	1.00	0.80	0.10	0.60	4.00	0.40	0.10	-	-	0.10	-
	Min	-	-	-	0.40	2.50	-	-	-	-	-	-
ADC8	Max	7.00	1.30	5.00	0.60	0.30	2.00	0.30	0.20	0.20	0.10	-
	Min	5.00	-	3.00	0.20	-	-	-	-	-	-	-
AL Si 12 Fe	Max	13.50	0.90	0.08	0.55	0.10	0.15	0.10	0.15	0.10	0.05	0.05
	Min	10.50	0.45	-	-	-	-	-	-	-	-	-
AL Si 12 Cu	Max	13.50	0.80	1.00	0.55	0.35	0.55	0.30	0.15	0.20	0.10	0.10
	Min	10.50	-	-	0.05	-	-	-	-	-	-	-
AL Si 12 Cu1 Fe	Max	13.60	1.30	1.20	0.55	0.35	0.55	0.30	0.20	0.20	0.10	0.10
	Min	10.50	-	0.70	-	-	-	-	-	-	-	-
LM6	Max	13.00	0.60	0.10	0.50	0.10	0.10	0.10	0.20	0.10	0.05	-
	Min	10.00	-	-	-	-	-	-	-	-	-	-
LM13	Max	13.00	0.80	1.30	0.10	1.30	0.10	2.50	0.20	-	-	0.05
	Min	11.00	-	0.80	-	0.70	-	1.00	-	-	-	-
LM16	Max	5.50	0.60	1.50	0.50	0.60	0.10	0.25	0.02	0.10	0.05	0.05
	Min	4.50	-	1.00	-	0.40	-	-	-	-	-	-
LM2	Max	11.50	1.00	2.50	0.50	0.30	2.00	0.50	0.20	0.30	0.20	-
	Min	9.00	-	0.70	-	-	-	-	-	-	-	-
LM24	Max	9.50	1.30	4.00	0.50	0.30	3.00	0.50	0.20	0.30	0.20	0.05
	Min	7.50	-	3.00	-	-	-	-	-	-	-	-
LM25	Max	7.50	0.50	0.20	0.30	0.60	0.10	0.10	0.20	0.10	0.05	-
	Min	6.50	-	-	-	0.20	-	-	-	-	-	-





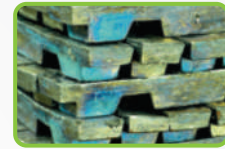
JC Groups



**JAYACHANDRAN ALLOYS (P) LTD**

(Manufacturers of Lead Alloys & Lead Oxide)

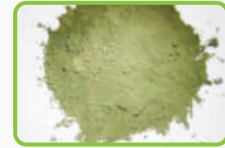
[www.jcalloys.com](http://www.jcalloys.com)



**ESWARI GLOBAL METAL INDUSTRIES (P) LTD**

(Manufacturers of Pure Lead & Lead Alloys)

[www.emimetals.com](http://www.emimetals.com)



**JAYACHANDRAN INDUSTRIES (P) LTD**

(Manufacturers of Lead Acid Batteries)

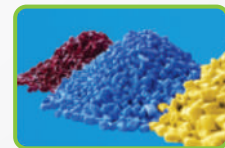
[www.jcbatteries.net](http://www.jcbatteries.net)



**JAYACHANDRAN PLASTICS (P) LTD**

(Manufacturers of Plastic Granules & Products)

[www.jcplastics.net](http://www.jcplastics.net)



**MOOGAMBIGAI METAL REFINERIES**

(Recycling waste Electrical and Electronic scraps)

[www.mmrr recycling.in](http://www.mmrr recycling.in)



[www.jcgroups.net](http://www.jcgroups.net)



Nithin Arumugam, Managing Director

**Annai Metal Refineries Private Limited**

Plot No.27 & 455, Sompura Industrial Area Second Stage, Bengaluru Rural 562 132, Karnataka, INDIA  
M: +91 91480 98777, E: [info@amrefineries.com](mailto:info@amrefineries.com)